

## Professional sauna heaters for commercial use





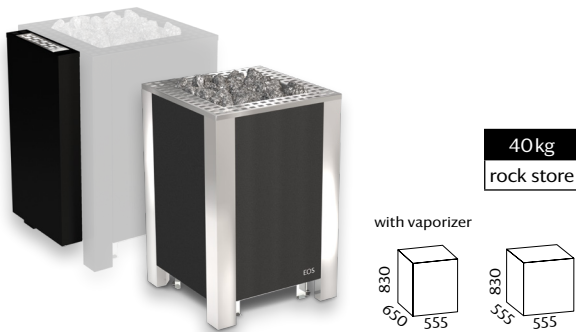
# Innovative power packs

From a classic commercial sauna to a state-of-art themed sauna - with EOS commercial sauna heaters every sauna bath becomes a relaxing experience. Thanks to continuous innovation and unique experience EOS provides solutions that perfectly fit the demands of your guests.

Thoroughly chosen materials and elaborated craftsmanship in detail ensure a long lasting and reliable service even with very intensive use.

Trust in decades of unique experience and know-how with “made in Germany” quality.

## Commercial sauna heaters



### EOS BlackRock

High-performance floor-standing sauna heater with a power range of up to max. 18kW. Uniform appearance on all sides. No rear side, no protruding terminal box.

High-contrast design with side panels with anthracite finish and corners made of polished stainless steel. Top cover of polished stainless steel. Also available with all sides and top with stylish matt black finish.

Thanks to an optional 3kW vaporizer, the BlackRock can also be used as Bi-O version for humid sauna operation. Retrofitting possible on site. Mounting brackets and complete safety guard rail optionally available.

Rock store fits approx. 40kg sauna stones. Suitable cover protection guard type 4

Power supply: 400V3N~50/60Hz  
Outer shell: Stainless steel, side panels with anthracite finish or matt black finish

Power	Sauna cabin	Item no. anthracite / black
12,0kW	14 - 18m³	94 7140 / 94 7312
15,0kW	18 - 25m³	94 7141 / 94 7313
18,0kW	24 - 30m³	94 7142 / 94 7314

Accessories	Item no. anthracite / black
EOS BlackRock vaporizer 3,0kW	94 7230 / 94 7324



### EOS Goliath HD

The EOS Goliath sauna heater unites modern design with reliable top performance. Exceptionally strong and durable construction, completely made of stainless steel.

The extra-large rock store with enlarged air channels ensures continuously stable air convection and perfect temperature stability. The high-performance heating elements have no contact with the stones for an extra-long service life and easy maintenance. Mounting brackets and complete safety guard rail optionally available.

“Heavy-duty” version with copper rails as standard inner wiring and therefore perfectly suitable for saunas with particulary intensive use.

Rock store fits approx. 75kg sauna stones. Suitable cover protection guard type 5

Power supply: 400V3N~50/60Hz  
Outer shell: Stainless steel with anthracite finish

Power	Sauna cabin	Item no.
18,0kW	24 - 30m³	94 7826
24,0kW	35 - 40m³	94 7827
30,0kW	50 - 65m³	94 7828
36,0kW	65 - 75m³	94 7829



### EOS 34.G HD

Heavy-duty sauna heater with very stable, reinforced construction in two sizes. Completely made of stainless steel with exceptionally robust 3-shell wall construction. The EOS 34.G HD features special designed rock store placed above the heating elements on the unique V-shape supports which ensure perfectly stable air convection. The stone volume can be expanded by up to 45kg with the optional stack frame.

“Heavy-duty” version with copper rails as standard inner wiring and therefore perfectly suitable for saunas with particulary intensive use.

15 - 21kW: Rock store fits approx. 30kg sauna stones. 24 - 36kW: Rock store fits approx. 45kg sauna stones. Suitable cover protection guard type 5

Power supply: 400V3N~50/60Hz  
Outer shell: Stainless steel, polished

Power	Sauna cabin	Item no.
15,0kW	18 - 25m³	94 8097
18,0kW	24 - 30m³	94 8098
21,0kW	24 - 34m³	94 8099
24,0kW	35 - 40m³	94 7360
27,0kW	40 - 50m³	94 7361
30,0kW	50 - 65m³	94 7362
36,0kW	65 - 75m³	94 7363



### EOS Mega HD

The powerhouse - currently the world’s most powerful electric sauna heater. Specially designed for intensive commercial operation in event sauna cabins. With the power range from 42kW up to impressive 72kW, this model is great for extensive sauna infusions (large infusion area of 70×110cm).

Durable stainless steel construction. Rock store with approx. 150kg volume separated from heating elements for stable air flow. Unique EOS-designed V-shape profiles in two layers as rock store bottom ensure effective water evaporation and improved air flow. Mounting brackets and complete safety guard rail optionally available.

“Heavy-duty” version with copper rails as standard inner wiring and therefore perfectly suitable for saunas with particulary intensive use.

Power supply: 400V3N~50/60Hz  
Outer shell: Stainless steel with finish in anthracite or red-brown “Rust Marble”

Power	Sauna cabin	Item no.
42,0kW	55 - 70m³	94 7735
48,0kW	70 - 80m³	94 7736
54,0kW	80 - 100m³	94 7737
60,0kW	100 - 130m³	94 7738
72,0 kW	130 - 160m³	94 7739



### EOS Zeus | Zeus L HD

Luxury class sauna heater in distinctive round design. The model’s highlight is the round-shaped case in a massive steel construction with impressive 100kg rock store. Optimal temperature stability.

Models with output capacities of 20 to 24kW are supplied with safety slots. For the 30 and 36kW models, an additional stone attachment frame is included in the delivery.

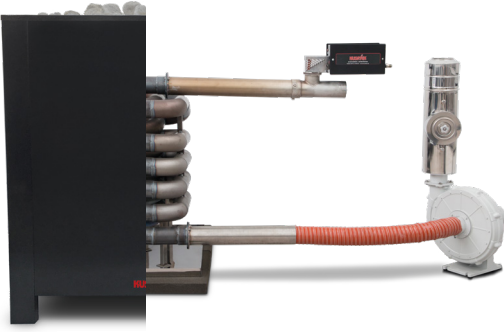
“Heavy-duty” version with copper rails as standard inner wiring and therefore perfectly suitable for saunas with particulary intensive use.

The optional round-shaped protection rail 360° or 270° sets the crowning touch to the heater’s design.

Power supply: 400V3N~50/60Hz  
Outer shell: Red-brown “Rust Marble” powder coating, also available in anthracite or black matt finish

Power	Sauna cabin	Item no. Zeus / Zeus L HD
20,0kW	24 - 34m³	94 7837 / 94 7849
24,0kW	35 - 40m³	94 7838 / 94 7850
30,0kW	50 - 65m³	94 7839 / 94 7851
36,0kW	65 - 75m³	94 7840 / 94 7852

## Commercial sauna heaters



### Gas-powered sauna heater-system

Unique design and performance - the powerhouse among its peers. Ideal for intensive commercial operation. Power range from 10 to 120kW, optionally expandable through the combination of several heater entities.

Particularly cost-efficient for large saunas. The gas-powered sauna heater-systems from KUSATEK feature the largest heating surface in the respective category thanks to the unique double-pipe spiral.

With the KUSATEK-system, in addition to a standard solution, individual special solutions can be realized for the most diverse installation situations. There are no limits to the performance and size of the sauna heater.

Very large stone volume up to approx. 680kg for perfect temperature stability. DVGW-certified.

Power supply: 400V3N or 230V1N  
Burner: Suitable for natural, propane and butane gas, 10 to 30kW per burner

Outer shell: Individual exterior design and solutions possible

## Commercial sauna heaters



### EOS 46.U XL

Sauna heater for an invisible installation behind the benches. Only 22cm gap to the partition wall needed. Space saving and increased safety! Robust stainless steel construction. Dust and water collection tray at the bottom. Special built-in water gutter ensure even distribution of water splashes over the entire rock store width. For saunas from 18 to 30m.

Rock store with approx. 20kg stone volume.

Delivery includes complete accessories set: Water splash funnel with 1m hose, cover protection safety grill.

Power	Sauna cabin	Item no.
15,0kW	18 - 25m³	94 7219
18,0kW	24 - 30m³	94 7222



### EOS Bi-O Mat U

Sauna heater for behind-the-bench installation. Features an integrated vaporizer with 1,5 - 2kW for flexible sauna climate. Manual water filling (automatic refilling optionally possible). Vaporizer position on the left of right side possible.

Rock store with approx. 15kg stone volume.

Delivery includes complete accessories set: Water splash funnel with 1m hose, cover protection safety grill.

Power	Sauna cabin	Item no.
6,0kW	6 - 8m³	94 4805
7,5kW	7 - 10m³	94 4806
9,0 kW	9 - 14m³	94 4807
12,0 kW	14 - 18m³	94 4808



### EOS Invisio Midi

Sauna heater for concealed under-the-bench installation. Requires only as little as 10 cm space between sauna wall and partition wall.

Durable construction with heating elements separated from the 20kg large rock store. Still allows classic water splashes on the rocks. Very service-friendly design. Adjustable height.

Includes water splash funnel with 1m hose and connector, safety grill.

Power	Sauna cabin	Item no.	unpainted / anthracite
6,0kW	6 - 8m³	94 5786 / 94 5813	
9,0kW	9 - 14m³	94 5787 / 94 5814	
12,0kW	14 - 18m³	94 5788 / 94 5815	



### EOS Bi-O Invisio vaporizer

External vaporizer for Invisio sauna heaters. The vaporizer can be mounted on the left or on the right hand and is available with 2,0 and 3,0kW.

The water tank made of high-quality stainless steel has a filling capacity of about 12l. The vaporizer is equipped with a dry-run protection with acoustic alarm.

Power supply: 230V 1N ~

Power	Item no.
2,0kW	94 6293
3,0kW	94 6294

## Sauna control units



EOS Compact DC or HC

For sauna heaters with 10,5kW or more power you will need a power extension unit.



EOS EmoTec D or H



EOS EmoTouch 3 (touchscreen)

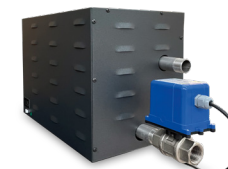
## Air disinfection unit



EOS UV-Clean

Cleans the supply air e.g. of a sauna/IR cabin

## Steam generator



EOS SteamAttrac

Compact steam generator with high-performance heating elements for steam rooms or saunas with humid operation. Stable steam production. Suitable for private and commercial operation.

Dimensions HWD: 330 × 450 × 270mm

Power supply: 3kW: 230V 1N ~ 50Hz  
4 - 6kW: 400V 3N ~ 50Hz