

EOS

From Experts to Experts

Premium sauna engineering
for commercial use



The Architecture of Wellness.



Premium sauna engineering for commercial use

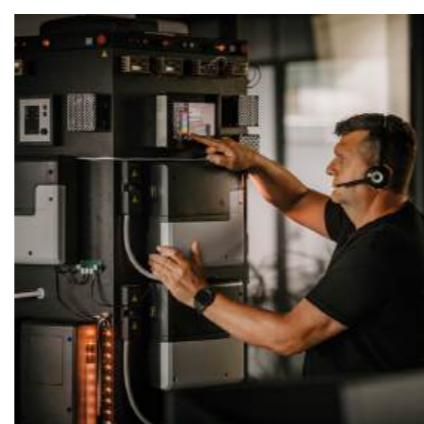
EOS is your global partner for advanced sauna heating solutions. We work closely with investors, architects, sauna builders, and operators of fitness studios, hotels, wellness facilities, and thermal spas. Our portfolio extends beyond sauna heaters, offering premium infrared and steam room systems, complemented by a comprehensive range of control units and accessories.

Solution-oriented customer support

- Assistance with planning
- Tested products / certified quality
- „made in Germany“ quality
- Personalized service consulting
- Spare parts supply for many years

Your advantages

- Know-how and decades of experience from Europe's leading premium manufacturer
- Extensive range of services and capabilities
- Versatile selection of models
- Durable, meticulously designed construction with carefully selected materials
- Service-friendly design
- Achievement of the highest safety standards through ongoing testing in our own test center
- All products manufactured in compliance with applicable standards and regulations



Sauna Heaters	For sauna cabin size*	Page
EOS Morpheus	7 - 18 m ³	4
EOS BlackRock	14 - 30 m ³	8
EOS Orbit	24 - 40 m ³	12
EOS Herkules XL S120 HD / S120 HD Vapor	24 - 65 m ³	16
EOS 34.G HD / Bi-O Star	18 - 75 m ³	20
EOS Goliath HD	24 - 75 m ³	24
EOS Zeus HD	24 - 75 m ³	28
EOS Mega HD / Mega S HD	60 - 160 m ³	32
Concealed sauna heaters		
EOS Invisio series	3 - 18 m ³	36
EOS 46.U series	6 - 30 m ³	40
Water mill saunas		
Gas-powered sauna heater-systems		
KUSATEK	10 - 200 m ³	45
Sauna Control Units		
EOS U-Command		48
EOS Compact		50

*applies to interior sauna cabins

Errors and omissions excepted. All information provided without guarantee.



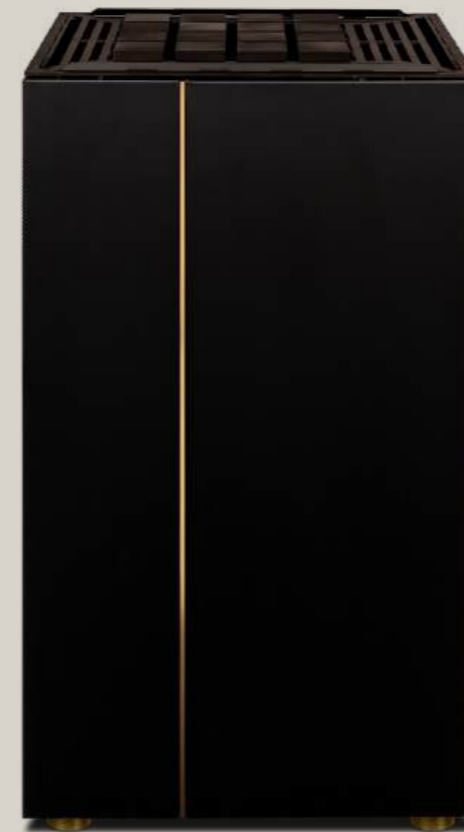
Further information
available at:

www.eos-sauna.com/en/wellness-facilities

EOS Morpheus

Modular design for maximum comfort

With the EOS Morpheus, EOS introduces an innovative sauna heater designed specifically for small commercial facilities. The focus is on easy maintenance, high efficiency, and a modern, modular design that significantly reduces service and maintenance times. Operators benefit from fast servicing and noticeable cost savings during day-to-day operation.

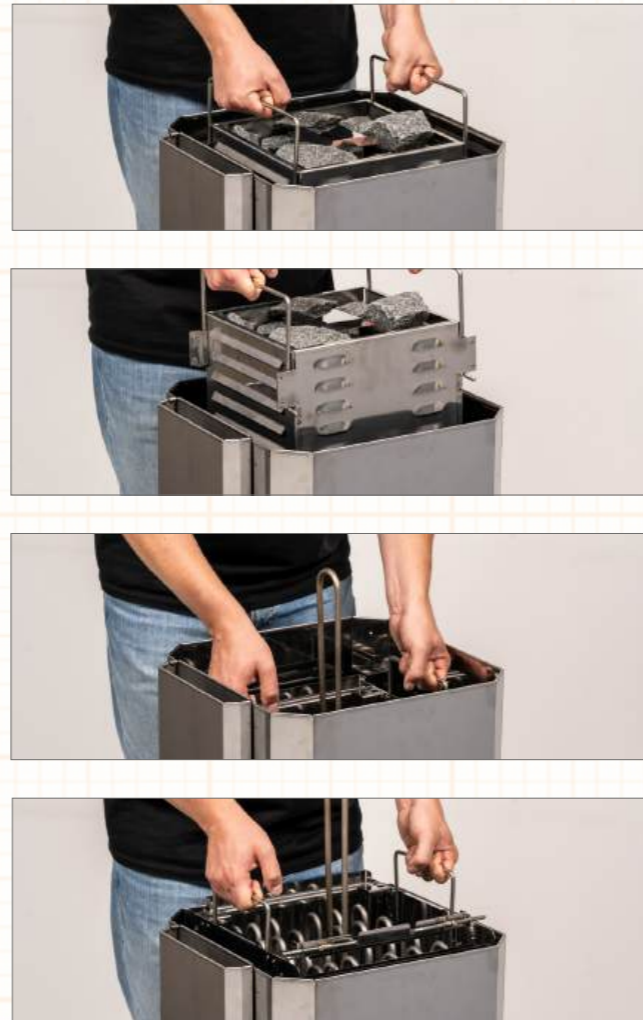


- Removable rock store
- Heating register 'plug & play'
- Servicing accessible from above
- Rock store with special 'Dual Heat'-heating element
- Adjustable feet for leveling and securing
- Special wiring upon request.

6,0kW + 1,0kW	8,0kW + 1,0kW	10,0kW + 1,0kW	12,0kW + 1,0kW
------------------	------------------	-------------------	-------------------

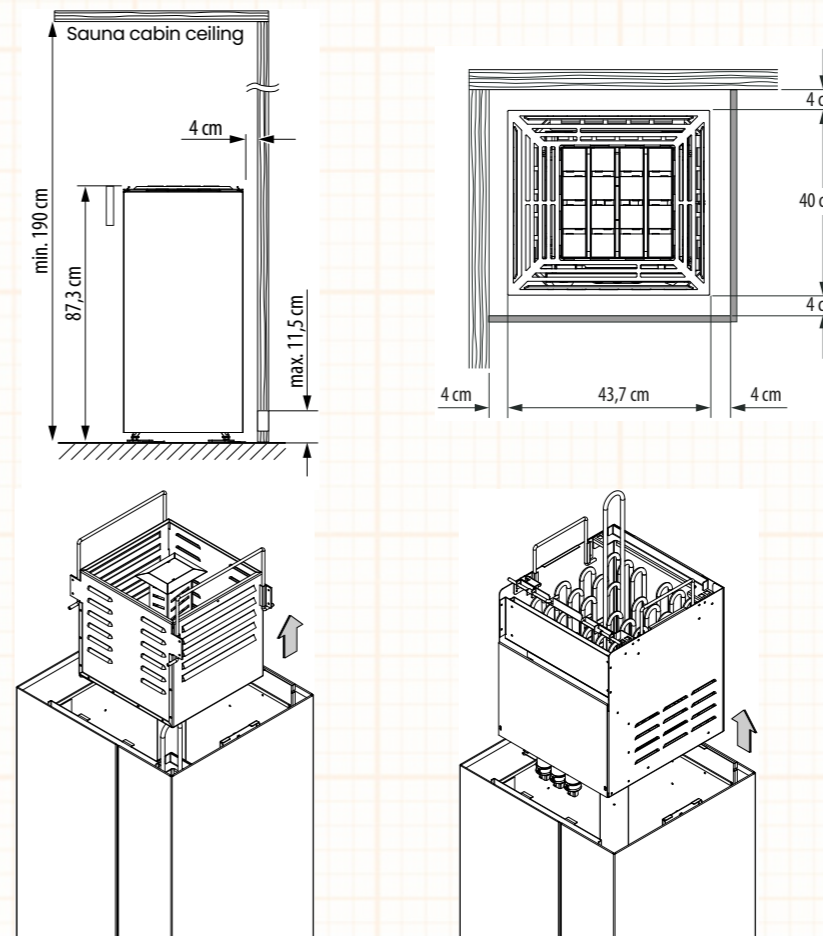
EOS Morpheus

- The heart of the Morpheus is a newly developed **rock store** and a new **heating element**. Both can be removed and replaced from above without any tools.
- Thanks to the **plug & play connection**, no electrician is needed to replace the heating elements. In addition, the rock store can be pre-filled, allowing for a clean and efficient on-site exchange—without making the sauna cabin dirty.
- In addition to conventional sauna stones, the EOS Morpheus also supports the exclusive **EOS Cubius stones**, available in elegant black, white and natural finishes.
- **Dual Heat technology** for optimal sauna infusions: A true comfort feature is the **separately connected 1.0 kW heating element**. It extends into a rock store insert, ensuring that the sauna stones remain hot at all times—even after the main heating element has switched off once the room temperature is reached. This Dual Heat technology noticeably enhances the quality of sauna infusions and provides a consistently enjoyable sauna experience.



Technical Overview

Minimum clearances



Technical specifications

Power output + Dual heat	Electrical connection	Dimensions H/W/D, in cm	For sauna cabin size*	Stone filling
6,0 kW + 1,0 kW	400 V 3N ~ 50/60 Hz	87,3 / 43,7 / 40	7 - 10 m ³	~ 25 kg
8,0 kW + 1,0 kW			9 - 14 m ³	
10,0 kW + 1,0 kW			11 - 15 m ³	
12,0 kW + 1,0 kW			14 - 18 m ³	

*applies to interior sauna cabins

Technical changes reserved



EOS

EOS BlackRock

Sauna Heater with a Square Footprint



Model



BlackRock Finnish Sauna	BlackRock + vaporizer Finnish & Bi-O Sauna	Water mill + BlackRock Finnish Sauna
-------------------------------	---	---

Colour



12,0kW	15,0kW	18,0kW
--------	--------	--------

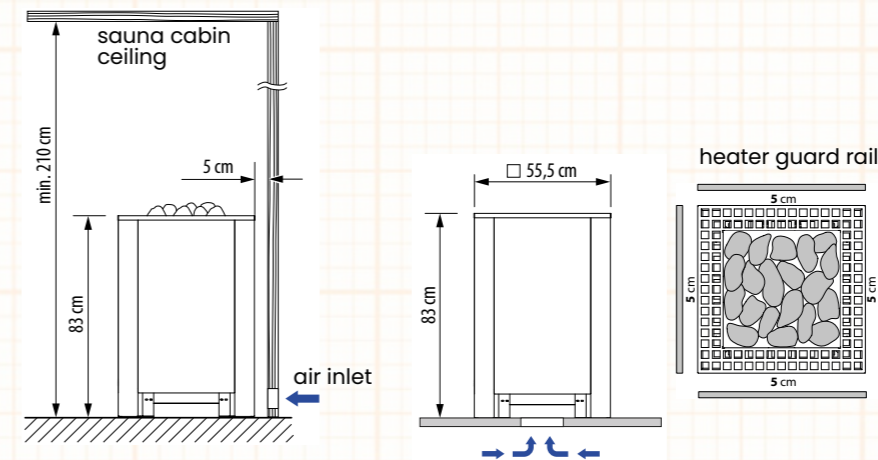
EOS BlackRock

- Sleek, **consistent design** with a square footprint
- **Uniform appearance from all sides.** Connection box integrated into the sauna heater.
- Very robust, durable stainless steel construction.
- **Optimal air convection** thanks to large side air channels for fast heating times.
- Equipped with a **water drop pan** to catch up non vaporated liquid.
- **Optional vaporizer**
 - For a flexible sauna climate settings ranging from hot and dry to mild and humid.
 - Can be retrofitted on site.**
 - **Maximum design flexibility:** the vaporizer can be easily mounted on the left, right, or front.
- Optional guard rail with mounting brackets.
- Special wiring upon request.



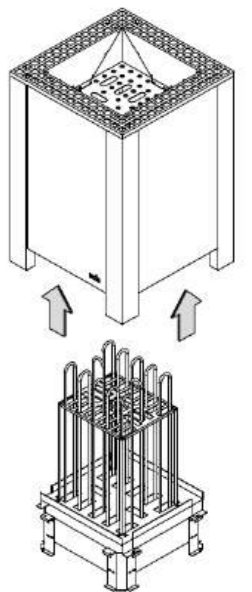
Technical Overview

Minimum clearances

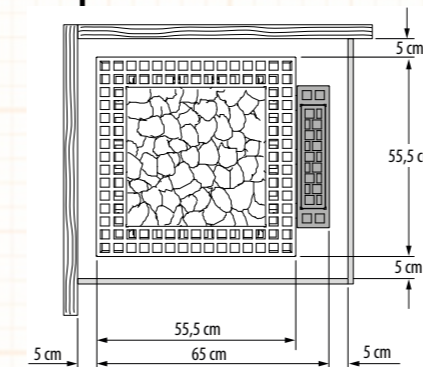


⚠ By installations in the middle of the sauna or in front of a glass wall, make sure to provide a sufficient air supply through an underfloor channel!

Heating elements



Vaporizer



Rear / Connection Side

⚠ Only one vaporizer may be mounted on the sauna heater. Installation is possible on the left, right, or front side of the heater (not on the rear/connection side).

Technical specifications

Power output	Vaporizer (optional)	Electrical connection	Dimensions H/W/D, in cm	For sauna cabin size*	Weight without rocks	Stone filling
12,0 kW	3,0 kW	400 V 3N ~ 50/60 Hz (Sauna heater)	83 / 55,5 / 55,5 (Sauna heater)	14 -18 m ³	40 kg	~ 40 kg
15,0 kW				18 -25 m ³		
18,0 kW				24 -30 m ³		
		230 V 1N ~ 50 Hz (Vaporizer)	76 / 39,5 / 10,5 (Vaporizer)			

*applies to interior sauna cabins

** When retrofitting with a vaporizer, the corresponding control unit must be used.

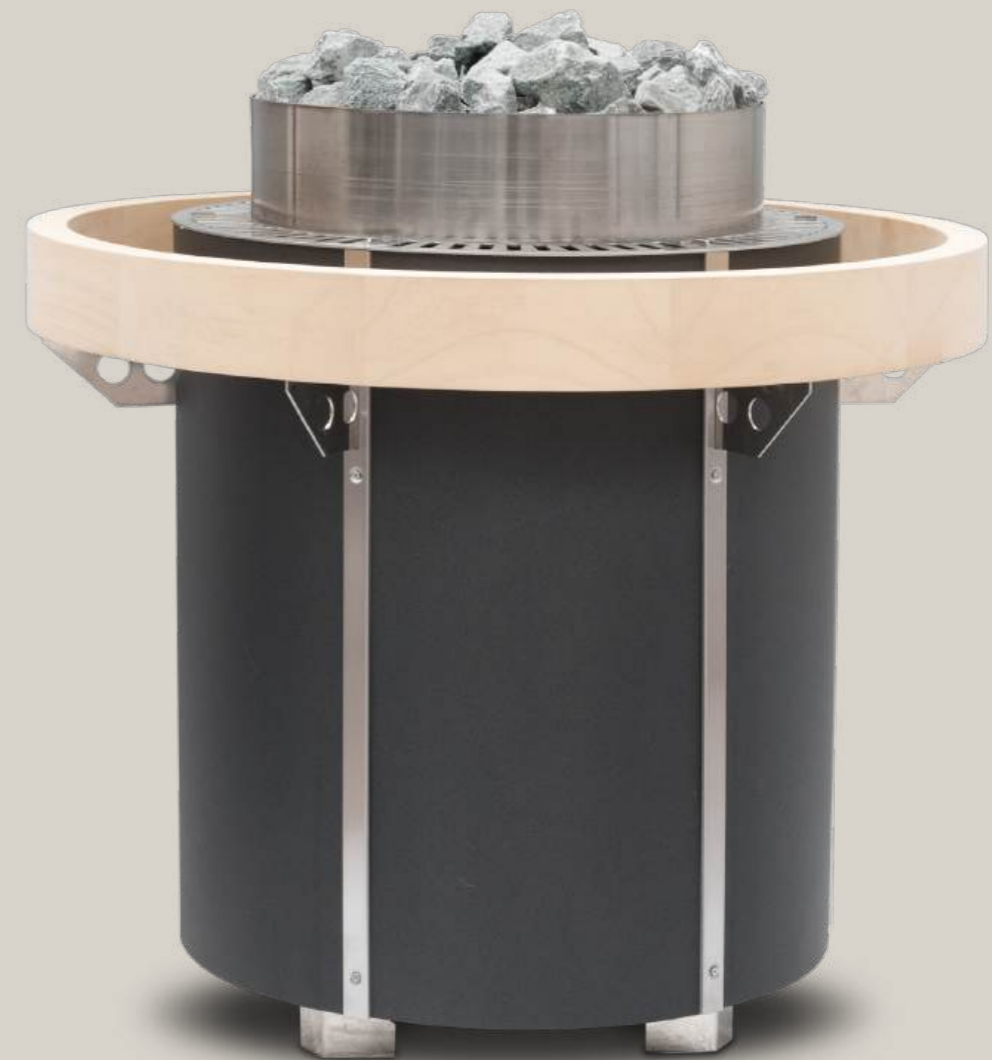
Technical changes reserved



EOS

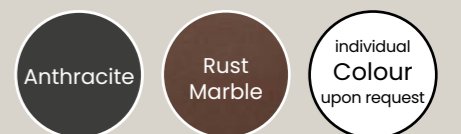
EOS Orbit

Timeless, classic, round design



18,0kW 21,0kW 24,0kW

Colour



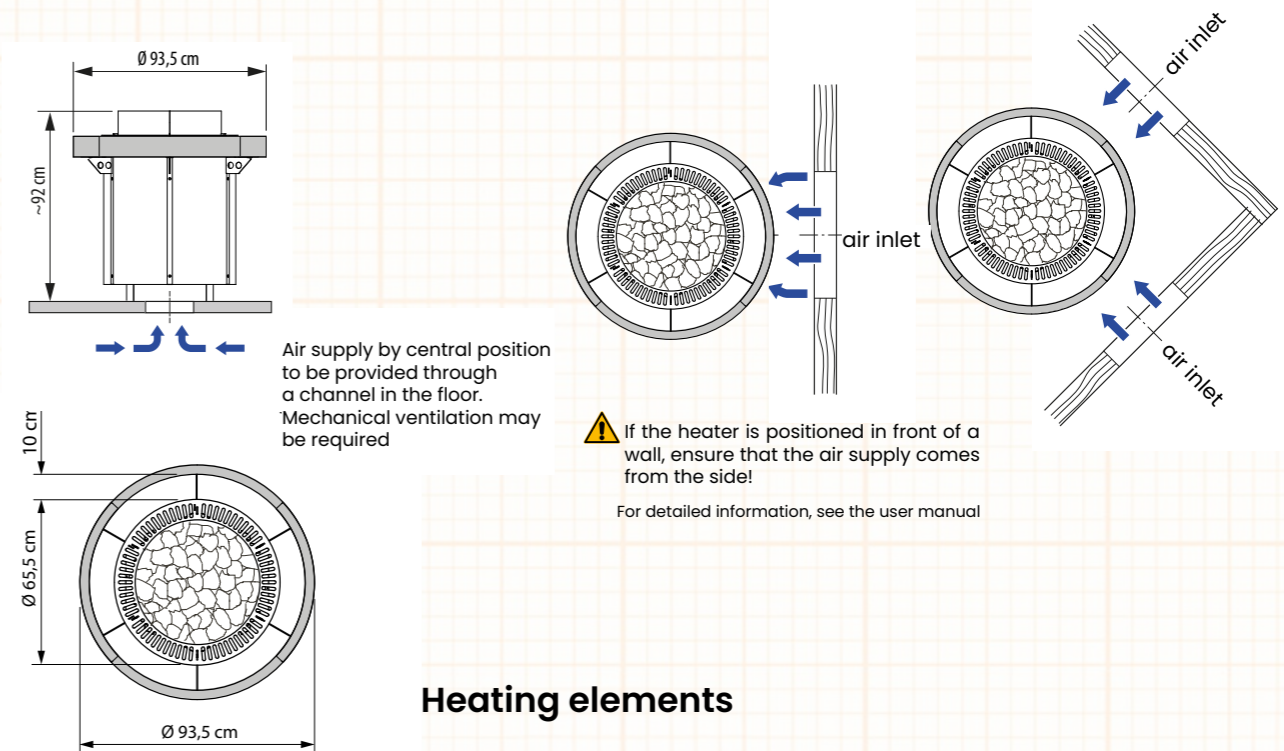
EOS Orbit

- Invisible **cable connection at the bottom** – ideal for installations in the center of the sauna.
- Reinforced **stainless steel** construction.
- Rock store separated from heating elements – ensures **optimal air convection** and guarantees a **long service life for the heating elements** .
- **Easy maintenance** as the heating elements can be replaced without removing the sauna stones.
- Unique **V-shape profiles** in two layers ensure effective and complete evaporation during the infusion.
- Equipped with a **water drop pan** to catch up non vaporated liquid.
- Optional **360° or 270°** guard rail made of high-quality wood types.
- Guard rail brackets (removable) are already **preassembled** on the heater.
- Special wiring upon request.



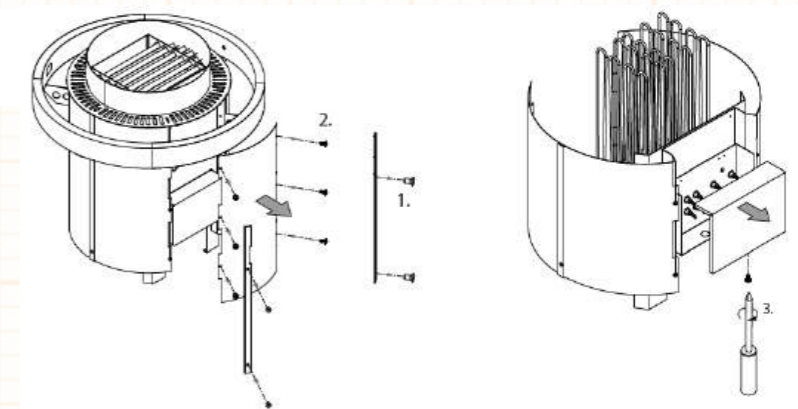
Technical Overview

Minimum clearances



Min. inner sauna height 210 cm.
Safety gap to ceiling min. 130 cm.

Heating elements



Technical specifications

Power output	Electrical connection	Dimensions D x H, in cm	For sauna cabin size*	Weight without rocks	Stone filling
18,0 kW	400 V 3N ~ 50/60 Hz	$\varnothing 65,5 \times 92$	24 - 30 m ³	~ 55 kg	~ 40 kg
21,0 kW			30 - 34 m ³		
24,0 kW			35 - 40 m ³		

*applies to interior sauna cabins

Technical changes reserved

EOS

EOS Herkules XL S120 HD / HD Vapor

Timeless design with two rock stores



Model



S120 HD

Finnish
Sauna

S120 HD
Vapor

Finnish &
Bi-O Sauna

Colour



Anthracite

Matt
black

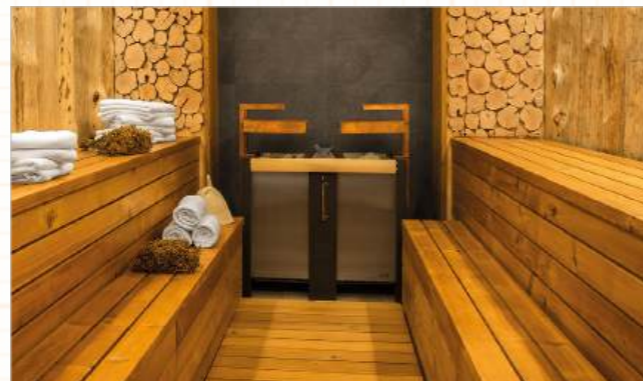
individual
Colour
upon request

18,0kW 24,0kW 30,0kW



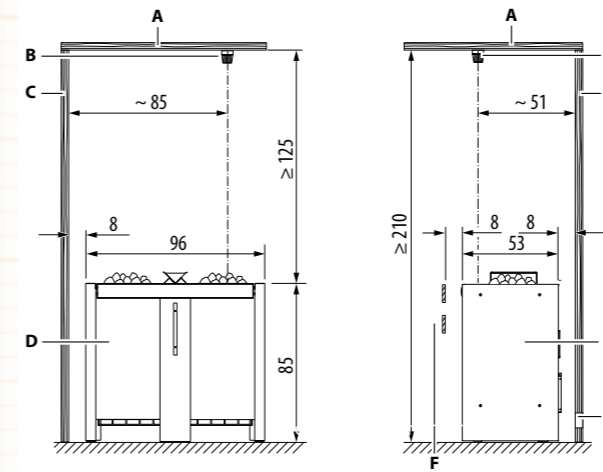
EOS Herkules XL S120 HD series

- **120 kg stone volume:** two rock stores with 60 kg volume each. Sauna infusions possible on the left and right side.
- Equipped with essence & herbs holder and a **water drop pan** to catch up non vaporated liquid.
- **Internal wiring made with massive copper bus bars.**
- **Vapor Model**
 - Flexible sauna climate settings.
 - Built-in 3 kW / 4 kW vaporizer with level indication and automatic refilling.
 - Dry-run protection / acoustic alarm
- A wide range of accessories including:
 - Cover protection rail
 - Rear wall cover panel
 - Heater guard rail
- Optional essence tray **Herkules Fragrance**
 - with an integrated water supply
 - designed to be filled with water, any doses of sauna infusion preparations or essential oils
- Special wiring upon request.



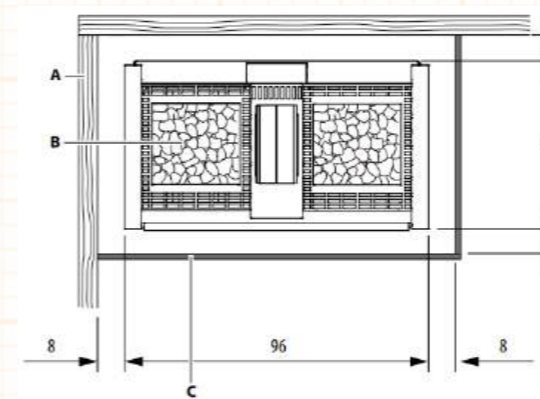
Technical Overview

Minimum clearances



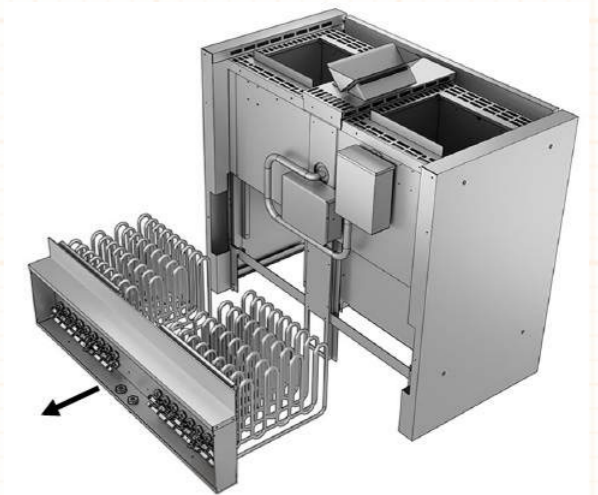
- A. Sauna ceiling
- B. Temperature sensor
- C. Side wall
- D. Sauna heater
- E. Fresh air inlet
- F. Heater guard rail

Notice: Fresh air inlet with proper size must be provided either behind or under the heater as an air channel.



- A. Cabin wall ceiling
- B. Sauna heater
- C. Heater guard rail

Heating elements



Technical specifications

Power output	Vaporizer (Vapor)	Electrical connection	Dimensions H/W/D, in cm	For sauna cabin size*	Weight without rocks	Stone filling
18,0 kW	3,0 kW	400 V 3N ~ 50/60 Hz	85 / 96 / 53	24 - 35 m ³	85 kg	2 × 60 kg
24,0 kW	4,0 kW			35 - 45 m ³		
30,0 kW				45 - 65 m ³		

*applies to interior sauna cabins



EOS

EOS 34.G HD

Engineered for demanding installation environments



Model



EOS 34.G HD



EOS Water mill sauna with 34.G GM HD



EOS Bi-O Star
Finnish & Bi-O Sauna

Size

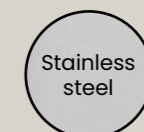


Size 1:
95 / 75 / 53 cm
15,0 - 21,0 kW
~30 kg stones



Size 2:
95 / 100 / 53 cm
24,0 - 36,0 kW
~45 kg stones

Colour



Stainless steel



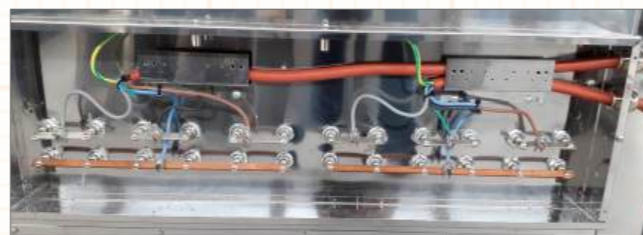
individual Colour upon request



15,0kW	18,0kW	21,0kW	
24,0kW	27,0kW	30,0kW	36,0kW

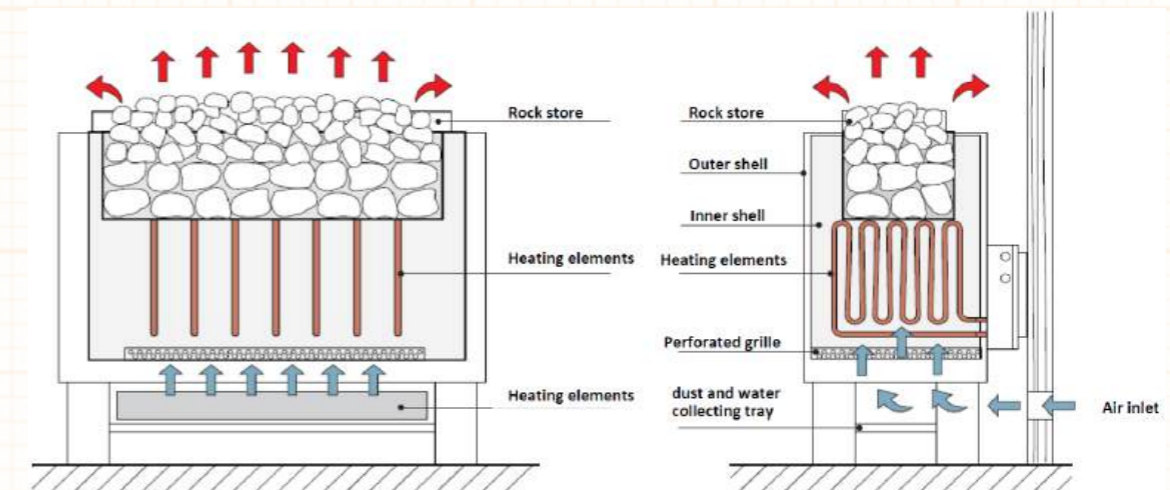
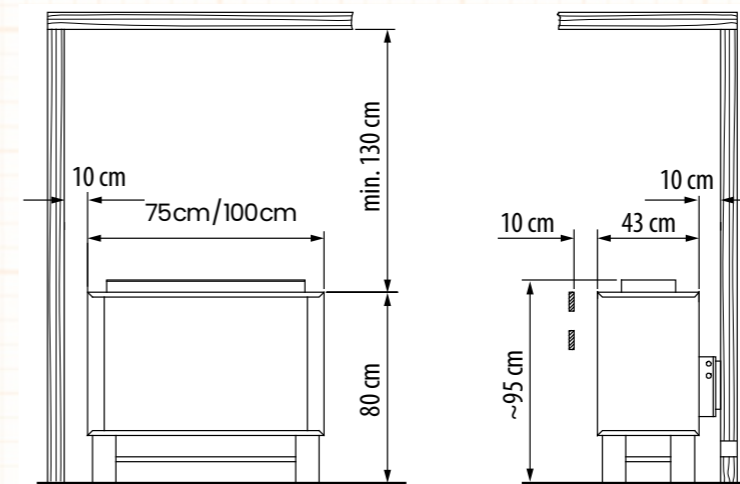
EOS 34.G HD

- Exceptionally robust, durable construction, completely made of stainless steel.
- **Internal wiring made with massive copper bus bars** – for especially intensive commercial use and demanding installation situations.
- Large distance between the rock store and the outer shell ensures **optimal air convection** and a **quick heat-up time**.
- The V-shape profiles serve as a collecting tray for the sauna infusion water. They also feature a **perforated drip tray** for better airflow.
- Equipped with a **water drop pan** to catch up non vaporated liquid.
- EOS Bi-O Star with vaporizer (automatic filling optional), dry-run protection with acoustic alarm and essences cupholder at the steam output.
- Special wiring upon request.
- A wide range of accessories including:
 - Cover protection rail
 - Stack frame for additional stones
 - Aroma Tray
 - Frame rack for heater guard rail



Technical Overview

Minimum clearances



Technical specifications

Power output	Vaporizer (Bi-O Star)	Electrical connection	Dimensions H/W/D, in cm	For sauna cabin size*	Weight without rocks	Stone filling	
15 kW	3,0 kW 5 l	400 V 3N ~ 50/60 Hz	95 / 75 / 53	18 - 25 m ³	48 kg	~ 30 kg	
18 kW				24 - 30 m ³	49 kg		
21 kW				24 - 34 m ³	50 kg		
24 kW	2x 2,0 kW 10 l		400 V 3N ~ 50/60 Hz	95 / 100 / 53	35 - 40 m ³	61,5 kg	~ 45 kg
27 kW					40 - 50 m ³	62,5 kg	
30 kW					50 - 65 m ³	63,5 kg	
36 kW					65 - 75 m ³	65,5 kg	

*applies to interior sauna cabins

Technical changes reserved





EOS

EOS Goliath HD

Contemporary construction
meets reliable high performance



Model

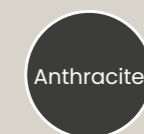


EOS
Goliath HD

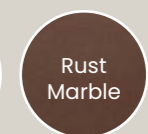


EOS Water mill sauna
with Goliath HD

Colour



Anthracite



Rust
Marble



individual
Colour
upon request



18,0kW	24,0kW	30,0kW	36,0kW
--------	--------	--------	--------

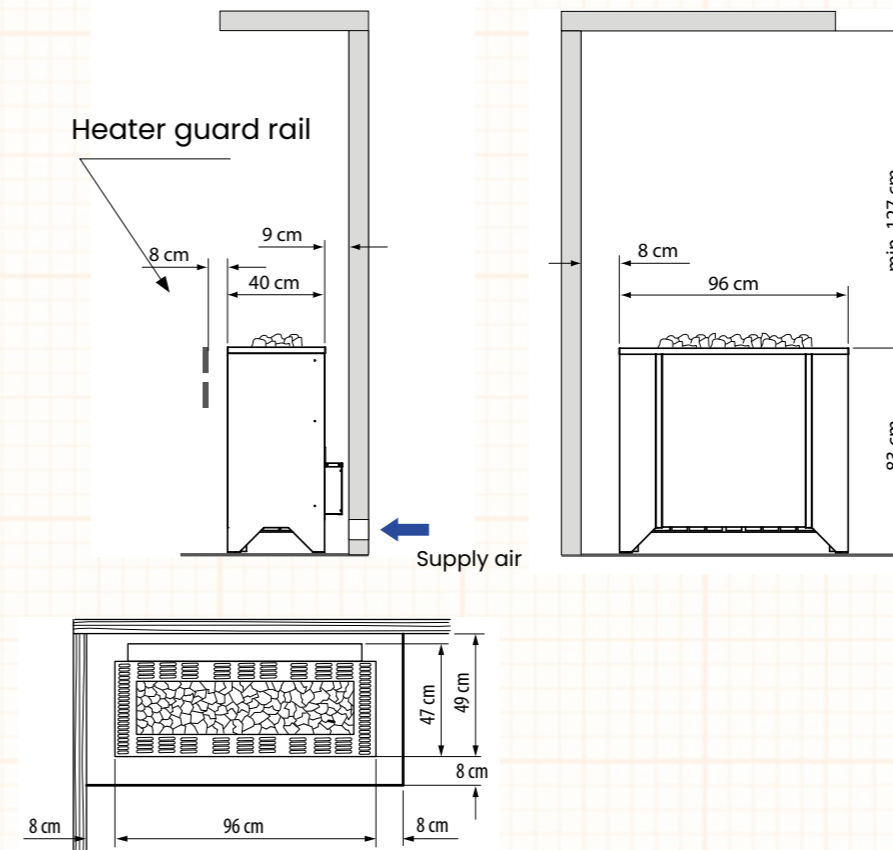
EOS Goliath HD

- Extremely robust, reinforced construction made entirely of **high-quality stainless steel**.
- **Copper busbars as standard inner wiring**. Specially designed for large event saunas and “Aufguss” ceremonies.
- **Extra-large 75 kg rock store** made of stainless steel separated from heating elements – ensures **optimal air convection** and guarantees a **long service life for the heating elements**.
- **Easy maintenance** as the heating elements can be replaced without removing the sauna stones.
- Unique **warted holes** ensure optimal evaporation during sauna infusions while maintaining stable air convection.
- Equipped with a **water drop pan** to catch up non vaporated liquid.
- Special wiring upon request.
- A wide range of accessories including:
 - Cover protection rail
 - Aroma Tray
 - Heater guard rail

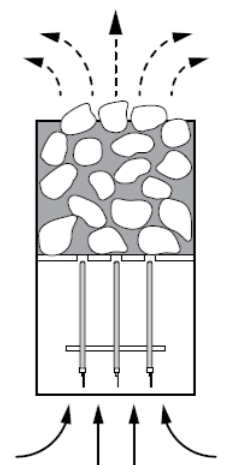


Technical Overview

Minimum clearances



Sauna stones and heating elements



Technical specifications

Power output	Electrical connection	Dimensions H/W/D, in cm	For sauna cabin size*	Weight without rocks	Stone filling
18 kW	400 V 3N ~ 50/60 Hz	83 × 96 × 47	24 - 35 m³	85 kg	~ 75 kg
24 kW			35 - 45 m³		
30 kW			45 - 65 m³		
36 kW			65 - 75 m³		

*applies to interior sauna cabins

Technical changes reserved



EOS

EOS Zeus HD / Zeus L HD

Sauna heater for themed and event saunas



Model



EOS
Zeus HD

EOS
Zeus L HD

Colour



20,0kW 24,0kW 30,0kW 36,0kW

EOS Zeus HD / Zeus L HD

- Very robust, durable construction with massive 8 mm steel wall.
- Large rock store fits approx. 60 kg stones for powerful sauna infusions and **optimal temperature stability**.
- **Copper busbars as standard inner wiring**.
- High precision laser-cut openings underline the extraordinary design and ensure optimal air convection.
- Equipped with a **water drop pan** to catch up non vaporated liquid.
- **EOS Zeus L HD :**
 - Alternative design with straight-lined upper section.
 - Ideal for installations in front of glass panels or in the center of the sauna.
- Optional round guard rail in 360° or 270°
- Special wiring upon request.

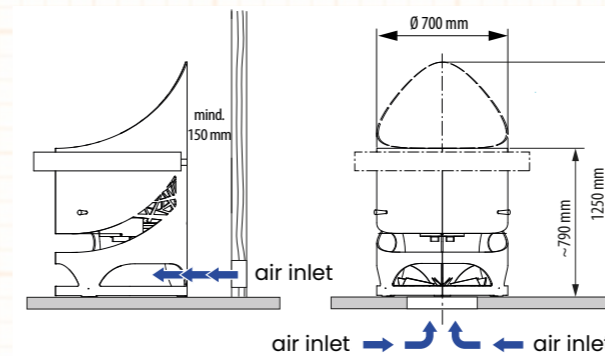


The models with 30 kW and 36 kW output are supplied with stack frames.



Technical Overview

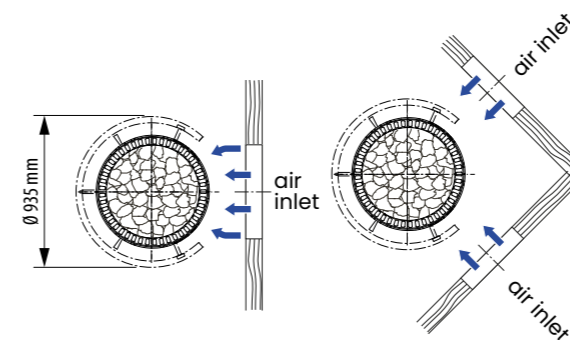
Minimum clearances



⚠ If the heater is in the middle or in front of a glass wall, make sure that the supply air comes from below!
If there is supply air from below, the drip tray can be omitted in case of fireproofed floor.

The air outlet must meet the following criteria:

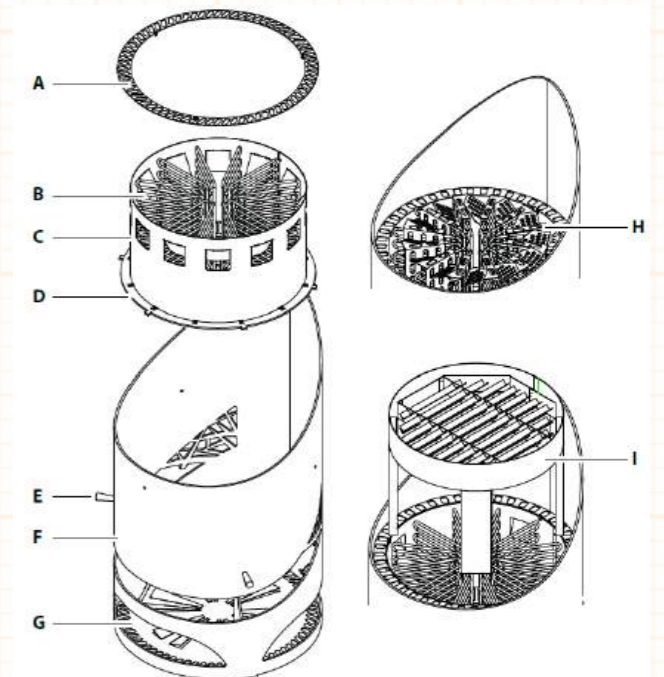
- Location: across from the heater
- Height: 30–50 cm above the cabin floor



⚠ If the heater is in front of a wall, make sure that the supply air comes from the side

Further description - see instruction manual

Heating elements



- A Decoration ring
- B Tubular heating element
- C Inner casing (heating element)
- D Support frame
- E Safety pin for heating unit
- F Outer casing
- G Drip pan
- H Safety slots, only for 20/24 kW
- I Stone attachment, only for 30/36 kW

Technical specifications

Power output	Electrical connection	Dimensions D × H in cm	For sauna cabin size*	Weight without rocks	Stone filling
20 kW	400 V 3N ~ 50/60 Hz	Ø 70 × 125 (Zeus HD)	24–30 m³	145 kg (Zeus HD)	~ 60 kg
24 kW			35–40 m³		
30 kW		Ø 70 × 79 (Zeus L HD)	50–65 m³	128 kg (Zeus L HD)	
36 kW			65–75 m³		

*applies to interior sauna cabins

Technical changes reserved



Aquardens - Terme Verona

EOS

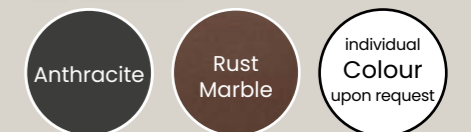
EOS Mega HD / Mega S HD

The world's most powerful electric sauna heater



36,0kW	42,0kW	48,0kW
54,0kW	60,0kW	72,0kW

Colour



EOS Mega HD

- Worldwide unique power range from **42kW - 72kW** (Mega S: 36kW - 48kW).
- Extra large **stone volume of approx. 150 kg** (Mega S: 100 kg). Large **sauna infusion area of 70 × 110 cm** (Mega S: 70 × 80 cm). Fast heat-up times and powerful sauna infusions are guaranteed.
- **Uniform appearance.** Ideal for position in the center, in front of glass surfaces or for installation with an additional enclosure.
- **Copper busbars as standard inner wiring.** Specially designed for large event saunas and "Aufguss" ceremonies.
- Expertly engineered, reinforced construction made of top-quality stainless steel.
- Rock store separated from heating elements – ensures **optimal air convection** and guarantees a **long service life for the heating elements.**
- **Easy maintenance** as the heating elements can be replaced without removing the sauna stones.
- Unique **V-shape profiles** in two layers ensure effective and complete evaporation during the infusion.
- Equipped with a **water drop pan** to catch up non vaporated liquid.
- Special wiring upon request.



World Spa Brooklyn



Sprudelhof Therme GmbH

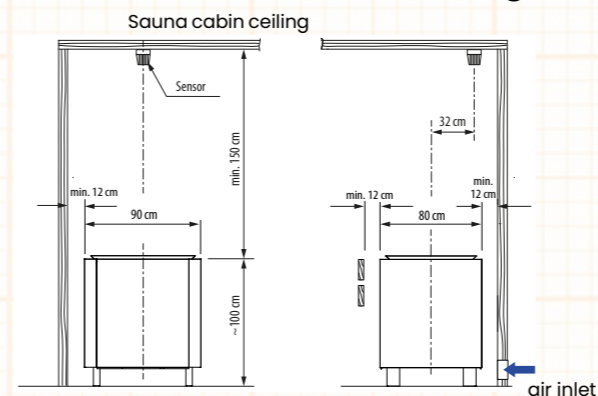


Ikkaalinen Spa & Resort

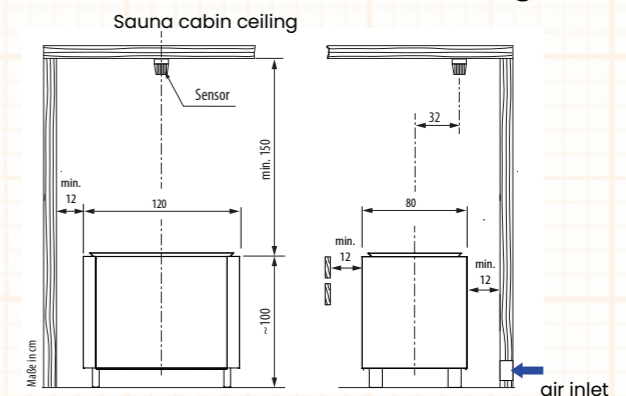


Technical Overview

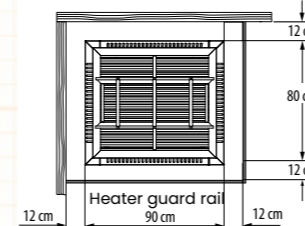
Minimum clearances (Mega S)



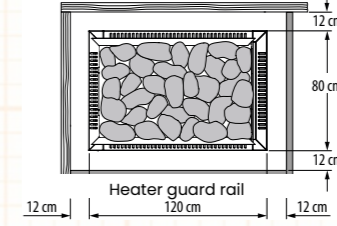
Minimum clearances (Mega)



Sauna cabin wall



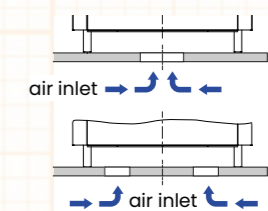
Sauna cabin wall



Heating elements



Assembly instructions



⚠ If the heater is in the center or in front of glass, make sure that the supply air comes from below! If necessary, mechanical ventilation with fans should be provided.

Technical specifications

Power output	Electrical connection	Dimensions H/W/D, in cm	For sauna cabin size*	Weight without rocks (Mega / Mega S)	Stone filling Grain size
36,0 kW	400 V 3N ~ 50/60 Hz	100 / 120 / 80 (Mega HD) 100 / 90 / 80 (Mega S HD)	60-75 m³	- / 110 kg	~ 150 kg (Mega HD) ~ 100 kg (Mega S HD) 100-150 mm
42,0 kW			65-80 m³	112 kg / 111 kg	
48,0 kW			70-90 m³	114 kg / 112 kg	
54,0 kW			80-100 m³	116 kg / -	
60,0 kW			100-130 m³	118 kg / -	
72,0 kW			130-160 m³	120 kg / -	

*applies to interior sauna cabins

Technical changes reserved





EOS

EOS Invisio series

The invisible underbench sauna heaters



Model



Invisio Mini 3,0kW - 6,0kW
 Invisio Midi 6,0kW - 12,0kW
 Invisio XL 9,0kW - 12,0kW

Colour



3,0kW	4,5kW	6,0kW
9,0kW	12,0kW	

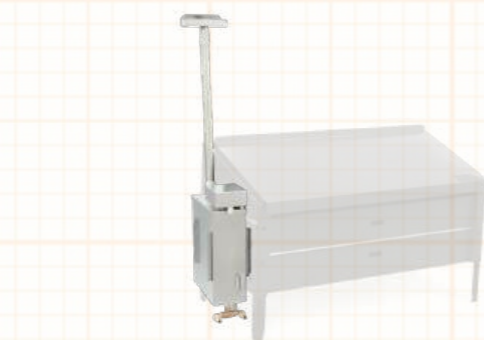
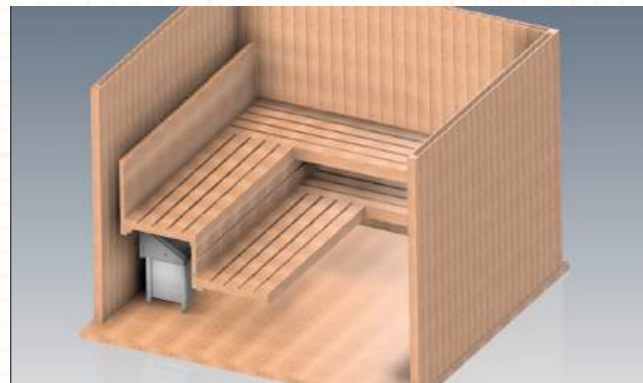


EOS Invisio series

- **Concealed installation** under the sauna benches.
- Space-saving design - **only a 10 cm gap between partition and main sauna wall.**
- Unique construction with a very **high level of safety** - no direct contact with the sauna heater.
- Traditional **sauna infusions are still possible** - water infusion set with stainless steel funnel is included.
- Optional **AquaDisp** infusion automation
 - Automates the water infusion process.
 - Can also be conveniently triggered via button inside the sauna cabin.
 - Infusion water is distributed across the entire width of the heater.
 - Ensures fast and even evaporation.
- Equipped with a **water drop pan** to catch up non vaporated liquid.
- Available in **three different sizes.**
- Thanks to an **optional vaporizer (2,0kW / 3,0kW)**, Invisio can also be used as Bi-O version for humid sauna operation. Retrofitting possible on site.
- Special wiring upon request.



Water funnel with silicone hose and protective grid included. Funnel connection possible on both the left and right sides.

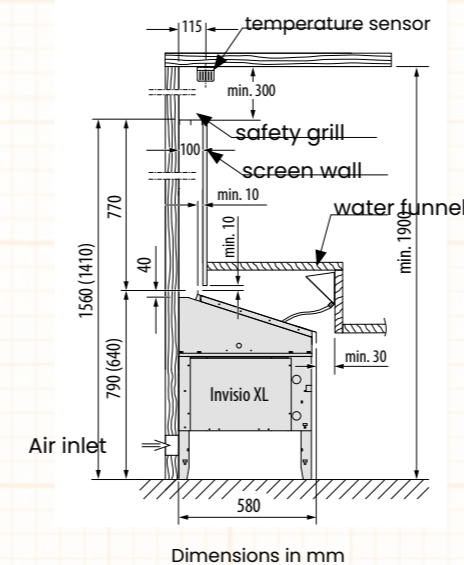


Optional vaporizer (2,0kW / 3,0kW) available.

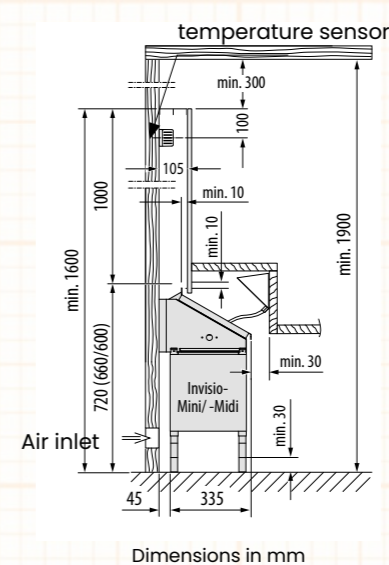
Technical Overview

Minimum clearances

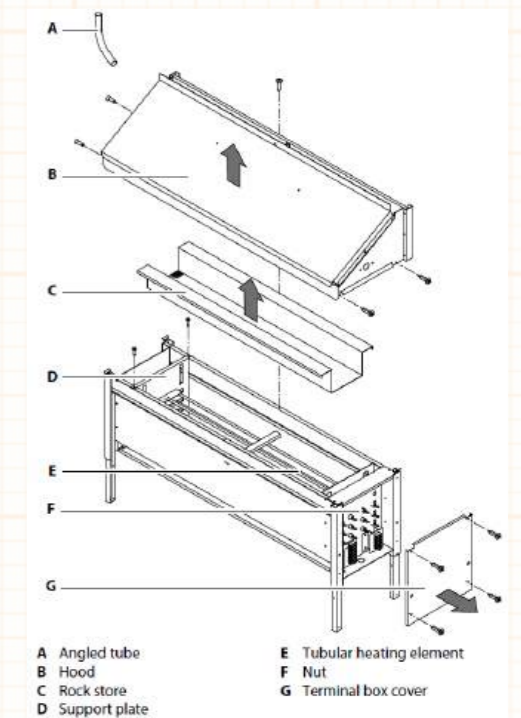
EOS Invisio XL



EOS Invisio-Mini / -Midi



Heating elements



Technical specifications

Invisio model	Power output	Electrical connection	For sauna cabin size*	Dimensions, HxWxD in cm	Stone filling
EOS Invisio Mini	3,0 kW	230 V 1N ~	3 - 4 m ³	Height 65 / 71 / 77 cm Width 66 cm Depth 38 cm	~ 15 kg
	4,5 kW		4 - 6 m ³		
	6,0 kW		6 - 8 m ³		
EOS Invisio Midi	6,0 kW	400 V 3N ~	6 - 8 m ³	Height 65 / 71 / 77 cm Width 116 cm Depth 38 cm	~ 20 kg
	9,0 kW		9 - 14 m ³		
	12,0 kW		14 - 18 m ³		
EOS Invisio XL	9,0 kW	400 V 3N ~	9 - 14 m ³	Height 65 / 80 cm Width 116 cm Depth 58 cm	~ 75 kg
	12,0 kW		14 - 18 m ³		

*applies to interior sauna cabins

Technical changes reserved

EOS 46.U series

Behind-the-bench sauna heaters for concealed installation behind a partition wall



Model



46.U Compact
6kW - 7,5kW

46.U
6kW - 12kW

Bi-O Mat U
6kW - 12kW
Finnish &
Bi-O Sauna



46.U XL
15kW - 18kW

Colour



6,0kW	7,5kW	9,0kW
12,0kW	15,0kW	18,0kW



EOS 46.U series

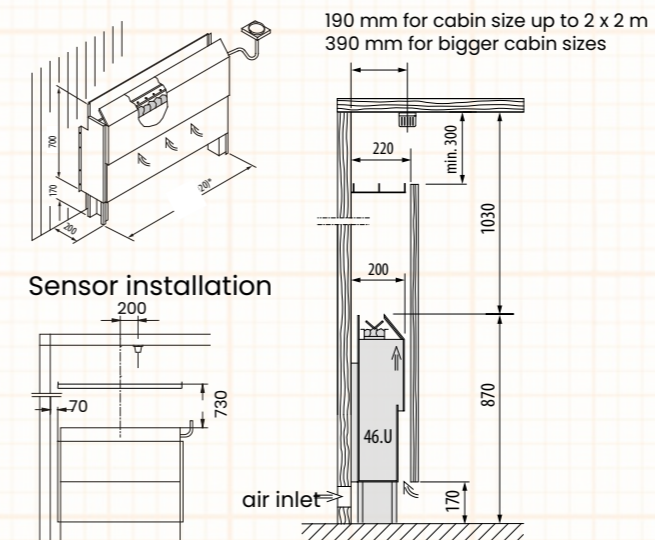
- Installation behind a partition wall with **only 22 cm gap to the sauna wall**, which saves a lot of valuable space in a sauna cabin.
- With only 20 cm depth EOS 46.U heaters belong to the **slimmest models on the market today**.
- The concealed installation ensures at the same time **increased safety** in use – the heater cannot be accidentally touched while it is hot.
- Available in **three different sizes**.
- Traditional **sauna infusions are still possible**.
- Equipped with a **water drop pan** to catch up non vaporated liquid.

- Optional **AquaDisp** infusion automation
 - Automates the water infusion process.
 - Can also be conveniently triggered via button inside the sauna cabin.
 - Infusion water is distributed across the entire width of the heater.
 - Ensures fast and even evaporation.
- EOS Bi-O Mat U with integrated vaporizer (automatic filling optional), dry-run protection with acoustic alarm.
- Special wiring upon request.

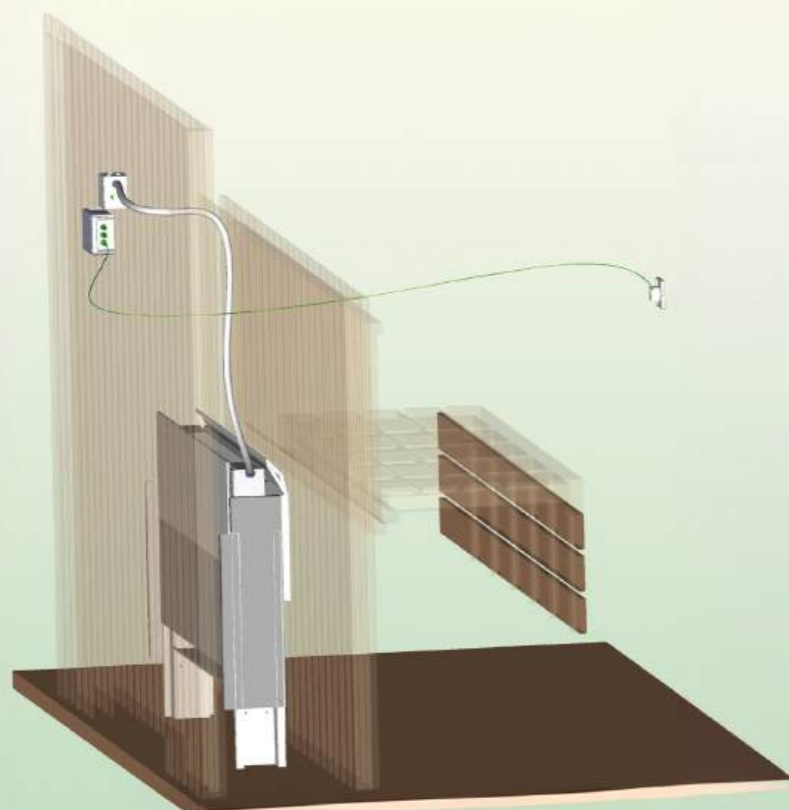
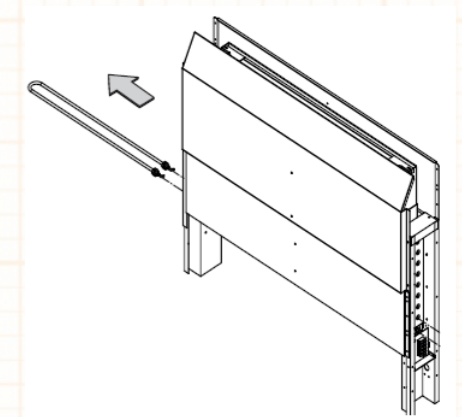


Technical Overview

Minimum clearances



Heating elements



Technical specifications

46.U model	Power output	Vaporizer	Electrical connection	Dimensions H/W/D, in cm	For sauna cabin size*	Weight without rocks	Stone filling
EOS 46.U Compact	6,0 kW	--	400 V 3N ~ 50/60 Hz	87 / 92 / 20 cm	6 - 8 m ³	19,0 kg	~ 10 kg
	7,5 kW				7 - 10 m ³	20,0 kg	
EOS Bi-O Mat U	6,0 kW	1,5 kW		87 / 112 / 20 cm	6 - 8 m ³	31,5 kg	~ 15 kg
	7,5 kW				7 - 10 m ³	32,5 kg	
	9,0 kW	9 - 14 m ³			33,0 kg		
12,0 kW	14 - 18 m ³						
EOS 46.U	6,0 kW	--		87 / 112 / 20 cm	6 - 8 m ³	23,5 kg	
	7,5 kW				7 - 10 m ³	24,0 kg	
	9,0 kW				9 - 14 m ³	24,5 kg	
	12,0 kW				14 - 18 m ³	25,5 kg	
EOS 46.U XL	15,0 kW	--		87 / 144 / 20 cm	18 - 25 m ³	44,0 kg	~ 20 kg
	18,0 kW				24 - 30 m ³	45,0 kg	

*applies to interior sauna cabins

Technical changes reserved

EOS Watermill sauna

for spectacular sauna infusions

- An eye-catcher and attraction in every sauna with a continuously rotating mill wheel and spectacular water splashes at pre-set intervals.
- Mill wheel includes pre-mounted drive and control box.
- Adjustable intervals, e.g. every 30 min.
- Automatic water refilling thanks to the built-in top-up device (requires permanent water supply).
- 34.GM HD heater with front panel of massive granite stone. 30 - 45 kg stones, or
- BlackRock heater, 40 kg stones, or
- Goliath HD heater, 75 kg stones.



EOS Watermill sauna set with BlackRock



EOS Watermill sauna set with Goliath HD



Upon request



KUSATEK

Gas-powered sauna heater-systems

With more than 30 years of experience and our own innovation department, we manufacture efficient sauna heaters as standard and individual solutions. Our DVGW-certified gas-powered Kusatherm sauna heater-systems have a power range from 10 to 120kW and are optionally expandable through the combination of several heater entities. There are no limits to the performance and size of the sauna heater.

- **Sustainable and low-maintenance**
due to durable and robust construction.
- **Efficient and effective with add. benefits**
Expandable with exhaust heat exchanger (4.5kW) and under-bench piping for energy recovery for e.g. water boilers (for showers, floor heating etc.).
- **Durable**
The system is decentralised, which prevents increased wear and tear.
- **Retrofitting possible**
Straightforward retrofitting subject to structural conditions.
- **Economic efficiency**
A unique heat storage system achieved through exceptionally large quantities of stone per heater within each performance class. The larger the system or sauna cabin, the more optimal the economic return on this investment.
- **As individual as your operation**
Individual installation solutions and adjustable settings tailored to your operation, such as weekly operating times.



KUSATEK K-Tec – Sauna control unit for gas-powered sauna heater-systems.



Kusatherm: Technical Overview



© Therme Lindau GmbH | David Matthesen



Infra FÜRth Bader GmbH, FÜRthermare Erlebnistherme



Elaisa Energetic Wellness

		10	15	20	25 - 30	50 - 60	75 - 90	100 - 120
Sauna cabin size*	m ³	10 - 15	15 - 23	23 - 30	30 - 45	45 - 90	90 - 135	135 - 230
Heating power	kW	9	14	18	23 - 27	45 - 54	67 - 81	90 - 108
Number of burners	piece	1	1	1	1	2	3	4
Number of ventilators	piece	1	1	1	1	1	1	1
Pressure - natural gas	mbar	22 / 50						
Pressure - propane / butane	mbar	28 / 50						
Connecting thread		R1/2"						
Gas consumption	m ³ /Std	0,9	1,4	1,8	2,3 - 2,7	4,5 - 5,4	6,7 - 8,1	9,0 - 10,8
Electrical connection	V	230 VN50Hz		400V3N50Hz				

Dimensions L x W x H (examples) – Individual sizes can also be provided upon request.

Heating spiral (Basic)	cm	37×37×88	50×50×100	63×63×100	80×80×100	80×80×110	80×130×110	80×170×110
Enclosure – inside	cm	52×52×90	65×65×100	78×78×100	95×95×100	95×95×110	95×145×110	95×185×110
Metal housing	cm	52×52×90	65×65×100	78×78×100	95×95×105	95×95×115	95×145×115	95×185×115
Stone enclosure (e.g. granite)	cm	57×57×90	70×70×100	83×83×100	100×100×105	100×100×115	100×150×115	100×190×115
Exhaust gas pipe, pressure-tight	mm	NW 130	NW 130	NW 130	NW 130	NW 130	NW 130	NW 130

Operation independent to room air conditions

Vertical chimney connection		-	X	-	-	X	-	-
Horizontal chimney connection		-	X	-	-	-	-	-

Operation dependent on room air conditions

Vertical chimney connection		X	X	X	X	X	X	X
Stone filling	kg	80	100	180	260	340	500	680

Cable cross sections

		for analog sensors			for digital sensors		
Connection to control unit	mm ²	5 × 2,5			5 × 2,5		
Control unit - room sensor	mm ²	2 × 0,5			upon request		
Control unit - heater sensor (STB)	mm ²	4 × 0,5					
Control unit - burner	mm ²	3 × 1,5			3 × 1,5		
Control unit - ventilator	mm ²	5 × 2,5			5 × 2,5		

All heaters sizes are approximate sizes. Best possible safety thanks to certification as per directive for gas-fueled devices (EU) 2016/426. Certificate CE-0085BT0401. Individual sizes can also be provided upon request.

*applies to interior sauna cabins

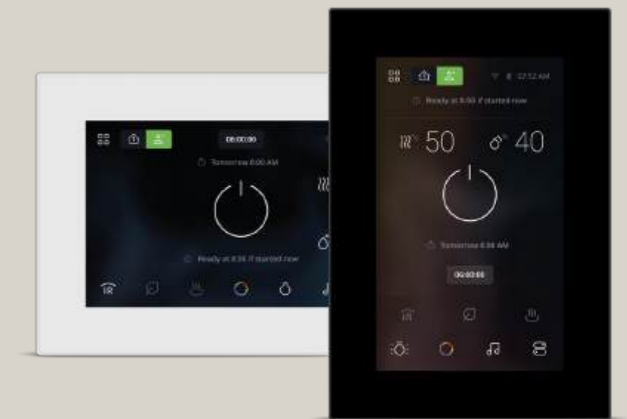
Technical changes reserved



EOS U-Command

The control system that makes wellness simple

- **Easy to use:** Intuitive control for all sauna users, no complicated manuals required.
- **Personalized experience:** User profiles for tailored wellness experiences. Multi-level access rights with PIN protection, numerous smart features, and guided setup.
- **Comfort from anywhere:** Monitor and control your sauna anytime via the app.
- **Future-proof:** Combined with the EOS Cloud, your sauna stays connected and up to date. Software updates are applied automatically via the internet. Operators save on maintenance costs, and end users regularly benefit from new features and improvements.
- **GDPR-compliant with European server location:** Full data protection compliance according to EU standards. Sauna builders and operators gain legal security, and end users enjoy maximum transparency and data safety.
- **Connectivity & IoT:** Wi-Fi with EOS App (smartphone required), connection to EOS Cloud. Remote control and monitoring via app or browser.
- **Integration & expansion:** Remote control modules: KNX or Modbus for BMS integration, module for remote start button



Flexible installation: Vertical or horizontal installation possible. Flush-mounted or surface-mounted installation.



Multifunctional: Controls up to two separate cabins. Supports sauna, infrared, steam room, and hammam (separate power units required per cabin)

Capacitive 5" colour touchscreen: 800 × 480 px, approx. 110 × 68 mm pop-out mechanism, concealed USB-C port, reboot button



Colour



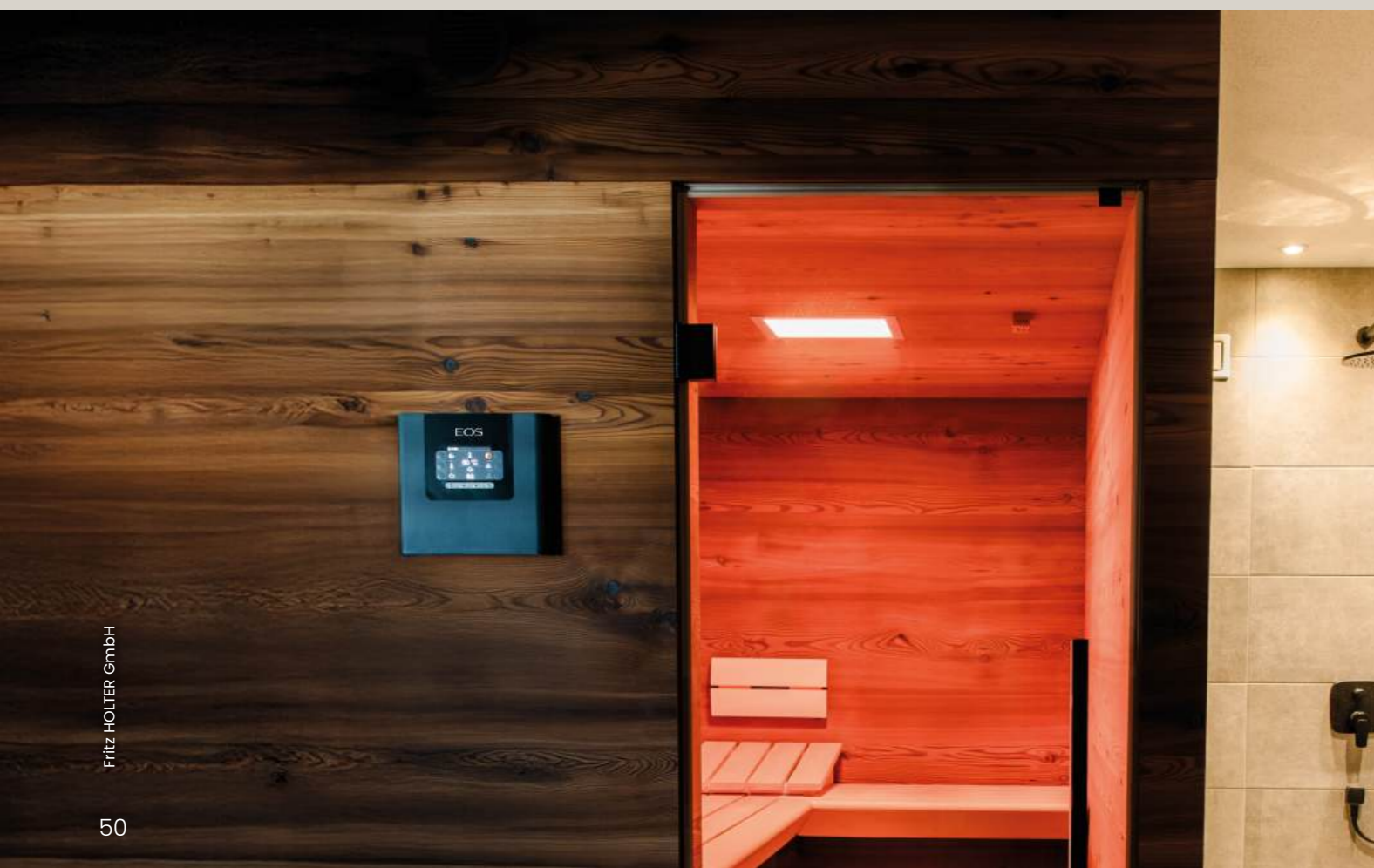
EOS Compact

Slim design with extensive control options

- Control unit for dry operation (EOS Compact DC / D18) or for dry and humid operation (EOS Compact HC / H18). Control range: 30 – 115°C (dry) and 30 – 70°C (humid).
- Power output of **10 kW** (DC / HC) or **18 kW** (D18 / H18), extendable with power extension devices.
- Large colour 3,5" TFT display.
- Modern, slim design housing.
- Easy installation, very simple to use
- 4 user profiles with pre-programmed settings
- Heating time limitation (6 hrs / 12 hrs / 18 hrs / unlimited)
- Output for light and fan, numerous additional functions
- Support for **remote control** and other **extensions**
- **Cloud-version:**
 - **WiFi and cloud capable**– always up to date with the latest software.
 - Integrated WiFi dongle allows easy pairing.
 - Connection option for the **door contact safety system** to monitor door status.
 - Extended control with the **EOS Spa Control App**.



Colour



EOS

EN - 01/2026

EOS Saunatechnik GmbH
Schneiderstriesch 1
D-35759 Driedorf
www.eos-sauna.com

Made in Westerwald, Germany