



SteamAttrac

Steam generator for steam rooms. For domestic use.

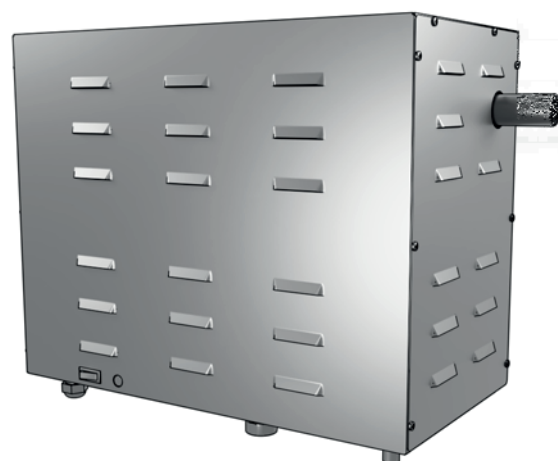
Compact steam generator for steam rooms. Designed for residential use for steam room cabins or saunas with humid operation. Compact wall-hanging design.

Your advantages:

- Durable stainless steel water tank, reinforced 1,5 mm wall.
- High performance long-life heating elements with practical single-block mounting for easy maintenance.
- Compact wall-mounting design.
- Robust stainless-steel outer housing.
- Dry run protection with automatic switch-off by overheating.
- Service-friendly design with easy access to all components.
- Automatic water level control.
- Can be universally used with various external control panels.
- Made in Germany Quality from EOS.

Specifications and features:

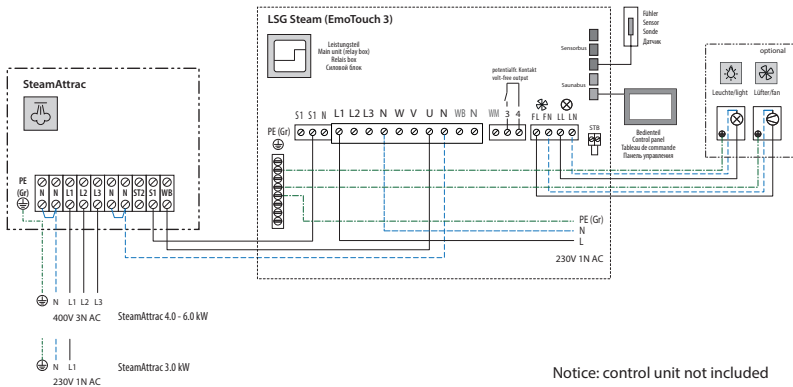
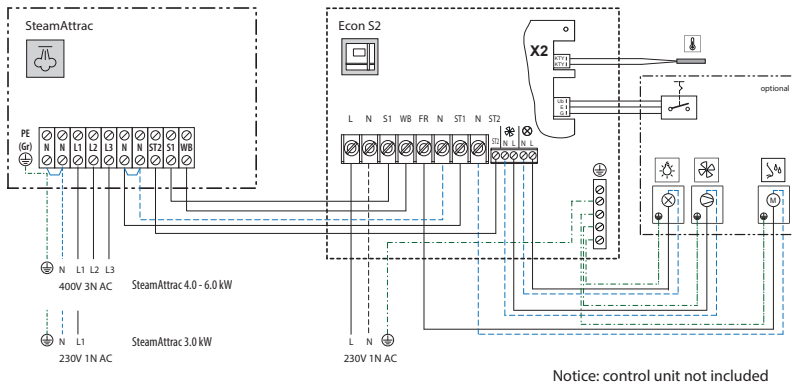
Housing:	Brushed stainless-steel
Heating system:	Electric, through heating elements
Water tank:	Stainless steel, 1,5 mm wall construction
Control:	requires an external control unit
Power output:	3.0 / 4.0 / 6.0 kW
Electrical connection:	3 kW - 230V 1N 50Hz 4 - 6 kW - 400 V 3N AC 50 Hz
Water supply:	3/4", cold water supply, 2-8 bar
Steam output	1" outer thread (brass union included)
Drain:	1" (drain valve optionally available)
Dimensions (H x W x D):	410 x 560 x 270 mm
Installation:	Wall-mounting, connections at right side and at the bottom



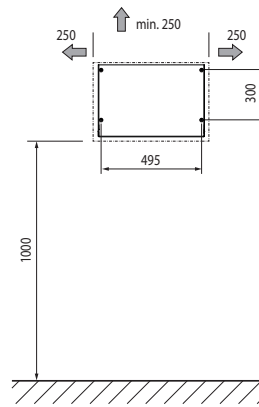
MADE IN GERMANY



Connection example



Installation



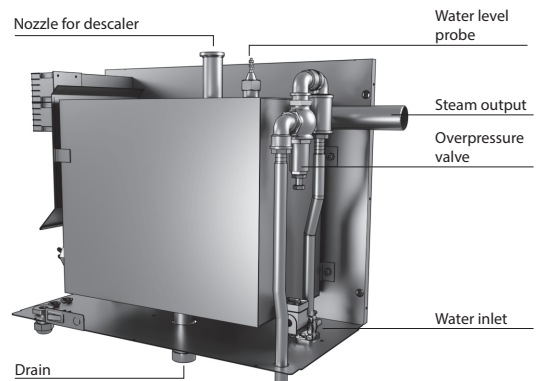
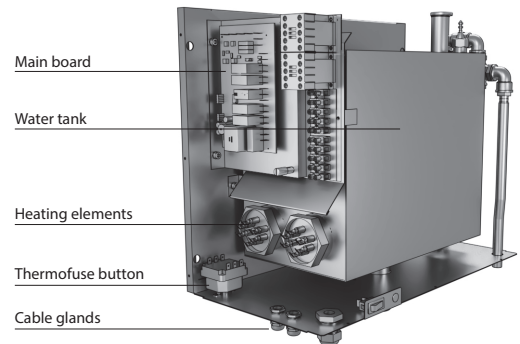
Mounting:

SteamAttrac is designed for wall mounting. The steam generator should be mounted at the level of the steam room.

The steam generator should be accessible for maintenance and servicing.

Refer to the installation manual for complete installation details.

Construction details



Optional equipment

Description	Item no.
LSG Steam unit	94.5950
Econ S2 control unit	94.6296
Essence dosing pump	94.6297
Descaler, 5 l	2001.4604

Technical specifications

Item no.	Power output	Power supply	Connection (mains)	Fuse protection	Steam output per hour	Dimensions H/W/D, mm	For cabin size	Net weight	Water supply	Water supply pressure	Steam output
94.6838	3,0 kW	230 V 1N 50Hz AC	3 x 1,5 mm ²	1 x 16 A	4 kg	410 x 560 x 270	2 - 3 m ³	18 kg	3/4" outer thread	2 - 8 bar	1" outer thread
94.6839	4,0 kW	400 V 3N 50Hz AC	5 x 1,5 mm ²	3 x 16 A	5 kg		3 - 4 m ³				
94.3840	6,0 kW				8 kg		4 - 7 m ³				