



SteamRock Basic

**Steam generator for steam rooms.
For domestic and commercial use.**

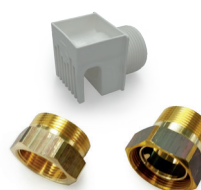
Premium class steam generator for steam rooms. Suitable for intensive commercial use, innovative construction with externally placed heating elements. Integrated automatic descaling system reduces maintenance costs.

Your advantages:

- Stable, by any water quality.
- New, innovative construction - heating elements mounted outside water tank without direct contact to water, no associated problems with scale deposits on heating elements.
- Designed for heavy-duty commercial operation.
- Quick adjustment of power output in 3 kW steps is easily possible directly on site, no re-wiring needed.
- Dry run protection with automatic switch-off by overheating.
- Service-friendly construction with quick access to all components.
- Integrated automatic descaling system, variable cleaning intervals, automatic draining of the water tank.
- Includes steam outlet, brass union for steam output, water hose.
- Made in Germany Quality from EOS.

Specifications and features:

Housing:	Plastic, stylish „Titanium“ finish front
Heating system:	Electric, basing on heating elements
Water tank:	Stainless steel, reinforced wall construction
Control:	requires an external control unit
Cleaning:	Automatic chemical descaling (requires liquid descaler, not included, optionally available)
Power output:	3.0/6.0/9.0 kW and 12/15/18 kW
Electrical connection:	400 V 3N AC 50 Hz
Water supply:	3/4", cold water supply, max 6 bar
Steam output	1 1/4" outer thread (brass union included)
Dimensions (H x W x D):	667 x 465 x 340 mm
Installation:	Wall-mounting, connections at the bottom



Includes fittings:

- Steam outlet with optimized steam deflector for safe steam injection
- special 2-part brass union for steam pipe connection - allows to quickly disconnect the pipeline at a later time, Ø35 mm.
- water supply hose (not shown).

Includes descaling system:

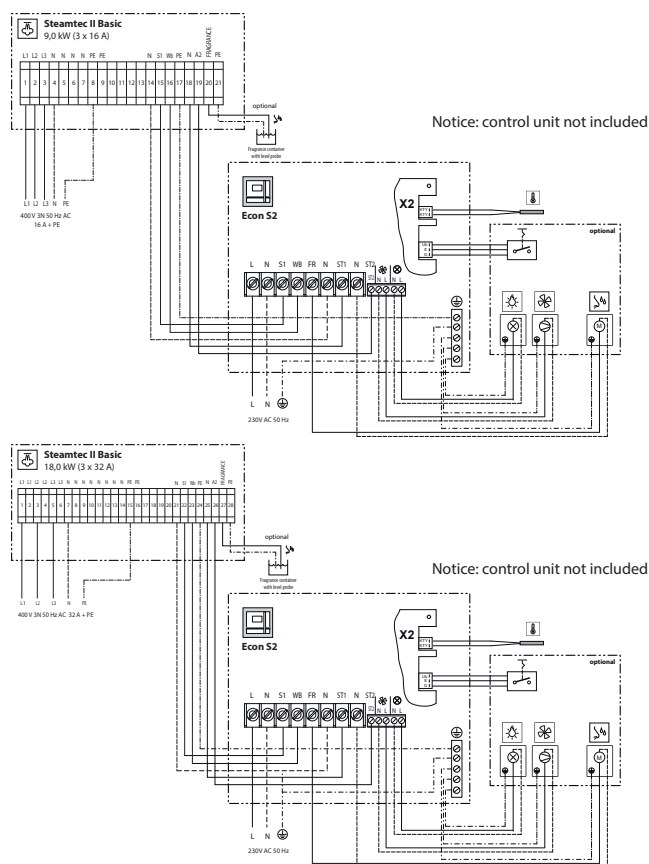
- 5 l container for descaling liquid
- level probe for level control
- integrated pump inside the generator
- automatic descaling at pre-set intervals
- extends servicing intervals
- extends the service life of the generator



MADE IN GERMANY



Connection example



Connection example refers to the control unit model Econ S2. For other models (e.g. EmoTouch II+ Steam) please refer to the control unit data sheets and installation manuals. Control units are not included.

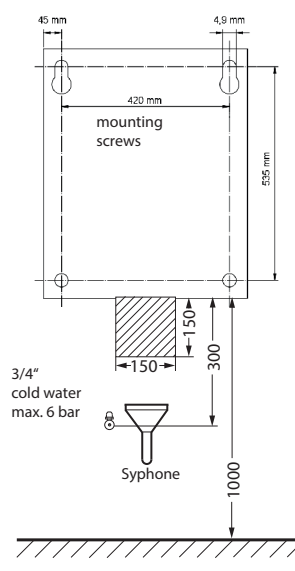
Technical specifications

Power range	Power supply	Connection mains - generator	Fuse protection
3,0 - 9 kW	400 V 3N 50/60 Hz AC	5 x 2,5 mm ²	3 x 16 A
12 - 18 kW		5 x 6 mm ²	3 x 35 A

All cross sections of cables are minimum diameters in mm² (copper wire).

Item no.	Power output	Steam output per hour	Dimensions H/W/D, mm	For cabin size	Net weight	Water supply	Water pressure (supply)	Steam output	Descaling system
94.5955	3,0 kW	6 kg	670 x 460 x 350	2 - 3 m ³	28 kg	3/4" outer thread	1 - 6 bar	1 1/4" outer thread	Integrated peristaltic pump, including 5 l container for cleaning liquid.
	6,0 kW	8 kg		3 - 5 m ³					
	9,0 kW	12 kg		5,5 - 10 m ³					
94.5958	12 kW	16 kg		9,5 - 12 m ³	30 kg				
	15 kW	20 kg		11,5 - 15 m ³					
	18 kW	24 kg	14,5 - 18 m ³						

Installation



Important notice:

The integrated descaling system may not fully replace an external softening system. By higher water hardness (>8° dH) an external descaling system is required.

By commercial operation a water softening system is required in either case.

Make sure to prove the local water quality in advance.

Regular inspections, incl. visual inspection of the water tank are required.

A liquid descaler (cleaner) is required for operation (not included, available as consumable item on request).

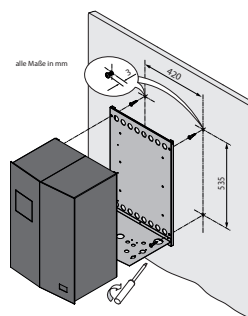
Make sure to observe the manual regarding the installation and planning of steam pipes.

Mounting:

Steamtec II Basic is designed for wall mounting. The steam generator may be mounted at the level of the steam room, above the steam room and also below the steam room.

During installation the steam output pipe may be directed downwards (default) or also upwards.

An installation place for cleaner container under the generator should be provided.



Optional equipment

Description	Item no.
EmoTouch II+ Steam control unit	94.5951
LSG Steam unit	94.5950
Econ S2 control unit	94.6296
Essence dosing pump	94.6297
Descaler, 5 l	2001.4604