

Sauna heater Herkules XL S120

For commercial sauna

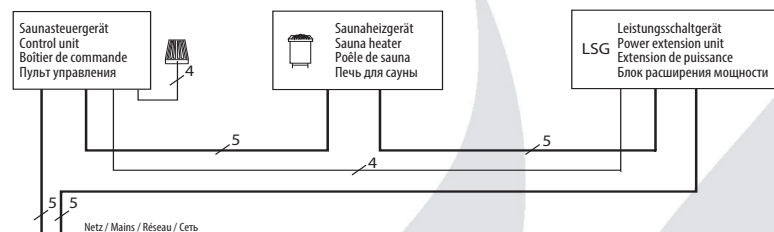
Floor-standing heater

Exclusive floor-standing sauna heater with the distinctive twin rock store design. Completely made of stainless steel. Heating elements have no contact to the sauna stones, which greatly improves the air convection and facilitates the servicing.

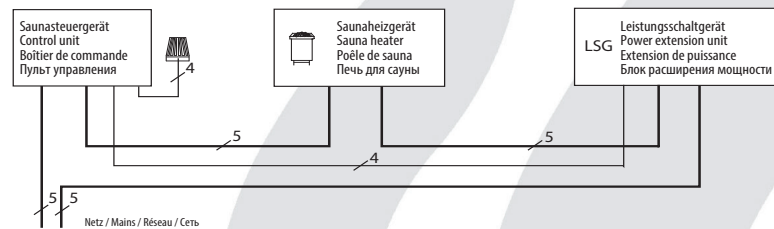
Two separate rock stores ensure optimized air convection and the improved water evaporation for a pleasant, mellow steam.

Installation diagram

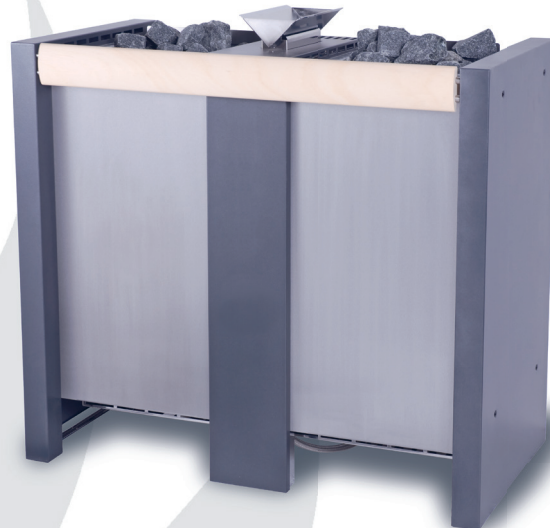
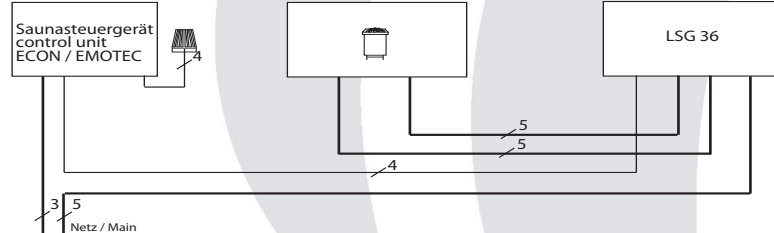
18 kW



24 kW

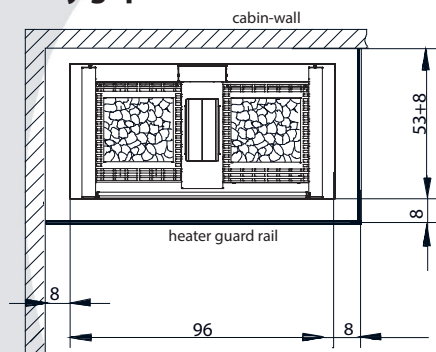


30 kW



CE IPx4
MADE IN GERMANY

Safety gaps



Min. inner sauna height 210 cm

The air intake vents must always be aligned behind the sauna heater.
The decoration wooden rail does not replace the heater guard rail as protection. Depending on the individual situation of installation the cabin manufacturer must provide a suitable protection to prevent accidental touching of the heater.

Power rating	Electrical Connection	Fuse protection control unit	Fuse protection LSG	Connection cable main - control unit	Connection cable main - LSG	Connection cable control unit - heater	Connection cable LSG - heater	Connection cable control unit - LSG
18 kW	3N AC 50 Hz	3 x 16 A	3 x 16 A	5 x 2,5 mm ²	5 x 2,5 mm ²	5 x 1,5 mm ²	5 x 1,5 mm ²	4 x 1,5 mm ²
24 kW			3 x 35 A		5 x 6 mm ²		5 x 4 mm ²	
30 kW	400 V	1 x 16 A	3 x 63 A	3 x 1,5 mm ²	5 x 16 mm ²		2 St. 5 x 4 mm ²	

All cross sections of a line are minimum diameters in mm² (copper wire)

Item no.	Exterior	Power rating	Heater dimensions H x W x D	For cabin size	Minimum dimensions of air intake and exhaust vents	Weight without stones without package	Stone filling	Power extension needed	For operation with control units
94.4276	Brushed stainless steel	18 kW	85 x 96 x 53 cm	24 - 35 m ³	50 x 6 cm	ca. 85 kg	2 x 60 kg (included in delivery)	yes	ECON H1, H2, H3 ECON D1, D2, D3 EMOTEC DC 9000 / DLF EMOTEC HCS 9003 / DLF EmoTouch II PB/AF/GF
94.4277	front, anthracite pearleffect coated sides	24 kW		35 - 45 m ³	50 x 8 cm			yes, min. LSG 18	
94.4278		30 kW		45 - 65 m ³	50 x 10 cm			yes, min. LSG 36	

