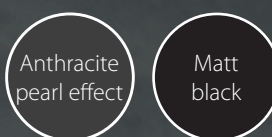


EOS Bi-O Cubo 2

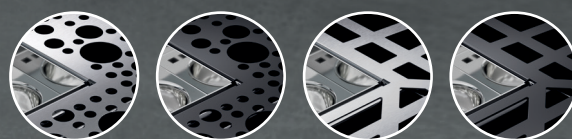
Best EOS technology in a new design



Colour



Top cover designs



Styling 1 – round holes

Styling 2 – structure

Heater guard rail



Wooden guard rail

Brackets only
(without wooden rail)

Power

7,5 kW | 9,0 kW | 10,0 kW | 12,0 kW

Dimensions / stone volume

H/W/D: ca. 95 × 40 × 39,5 cm
25 kg

The EOS Bi-O Cubo 2 is characterized by attractive details such as the new top cover designs which can be individually selected. The new design is rounded off with an extended outer shell and the now included rear wall cover panel in the colour of the outer shell for more flexibility and a 360°-look.

EOS Bi-O Cubo 2

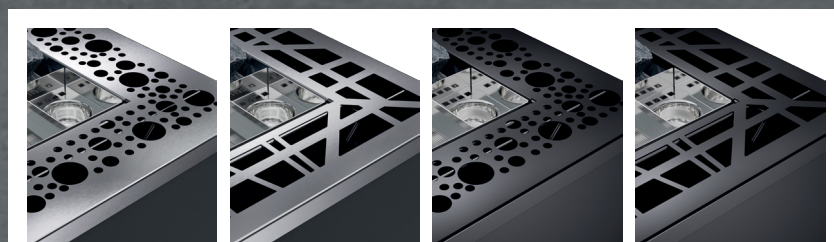
4 YEARS
warranty on heating elements
for privately used sauna heaters*



Heater guard rail optional



360° Look



Two top cover design stylings available



For a safe sauna experience -
EOSafe L optional

*according to our warranty conditions. See www.eos-sauna.com/en/warranty-conditions

